



GIN CITY

MITIGATION BANK

WETLAND CREDITS IN HARRIS COUNTY, TEXAS

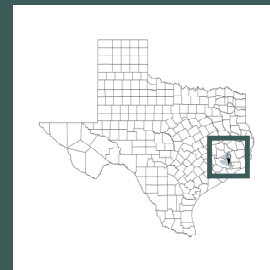
Gin City Mitigation Bank provides offsets for impacts to local freshwater habitat. It services the regions near the Houston Ship Channel and Mont Belvieu.



USACE DISTRICT: GALVESTON

LOCATION: HARRIS COUNTY

WETLAND OFFSETS: 1,170 +/- CREDITS



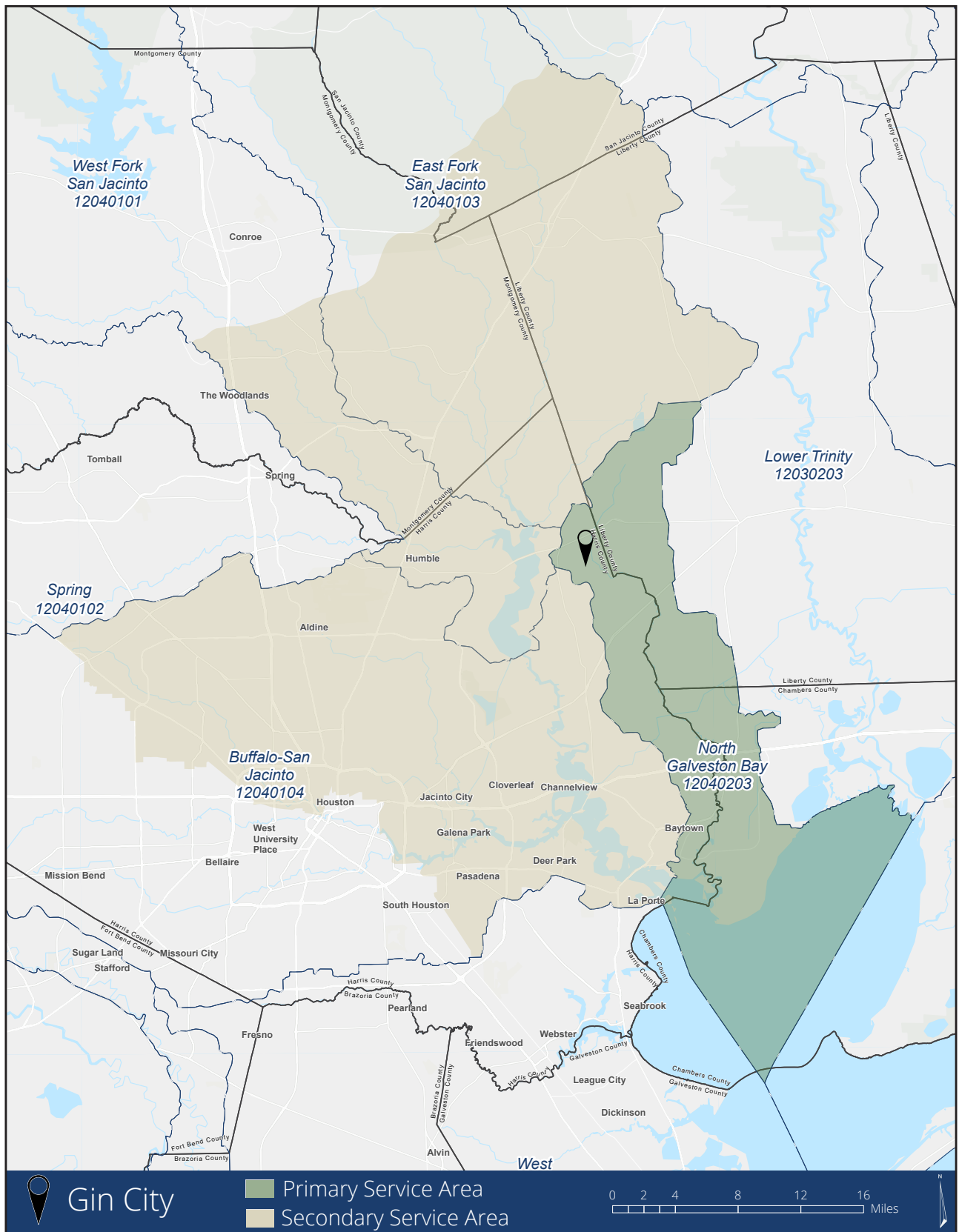
APPROXIMATE SERVICE AREA DETAILS

HYDROLOGIC UNIT CODE (HUC)	COUNTIES	MITIGATION POTENTIALS	HABITAT DESCRIPTION
North Galveston Bay 12040203	Chambers	Restoration	Freshwater Wetlands
Buffalo – San Jacinto 12040104	Harris		
West Fork San Jacinto 12040101	Liberty		
East Fork San Jacinto 12040103	Montgomery San Jacinto		

About Us: Mitigation Solutions USA (MSUSA) was founded in 2007, as an affiliate of Advanced Ecology Ltd. (AEL). MSUSA is a national leader in providing comprehensive environmental offsets — and has a history of successfully representing more than 28 mitigation banks and approximately 41 permittee-responsible mitigation (PRM) sites across the United States. MSUSA has expertise in navigating through the complexities of the mitigation industry and the challenges of brokering environmental credits to many markets. AEL was established in 1994 as an environmental firm of scientists who work on proprietary projects.

*All specifications are subject to changes without prior notice. Please contact us for details and verification. Specification version: 12/7/2017





Gin City

Primary Service Area
 Secondary Service Area

0 2 4 8 12 16 Miles